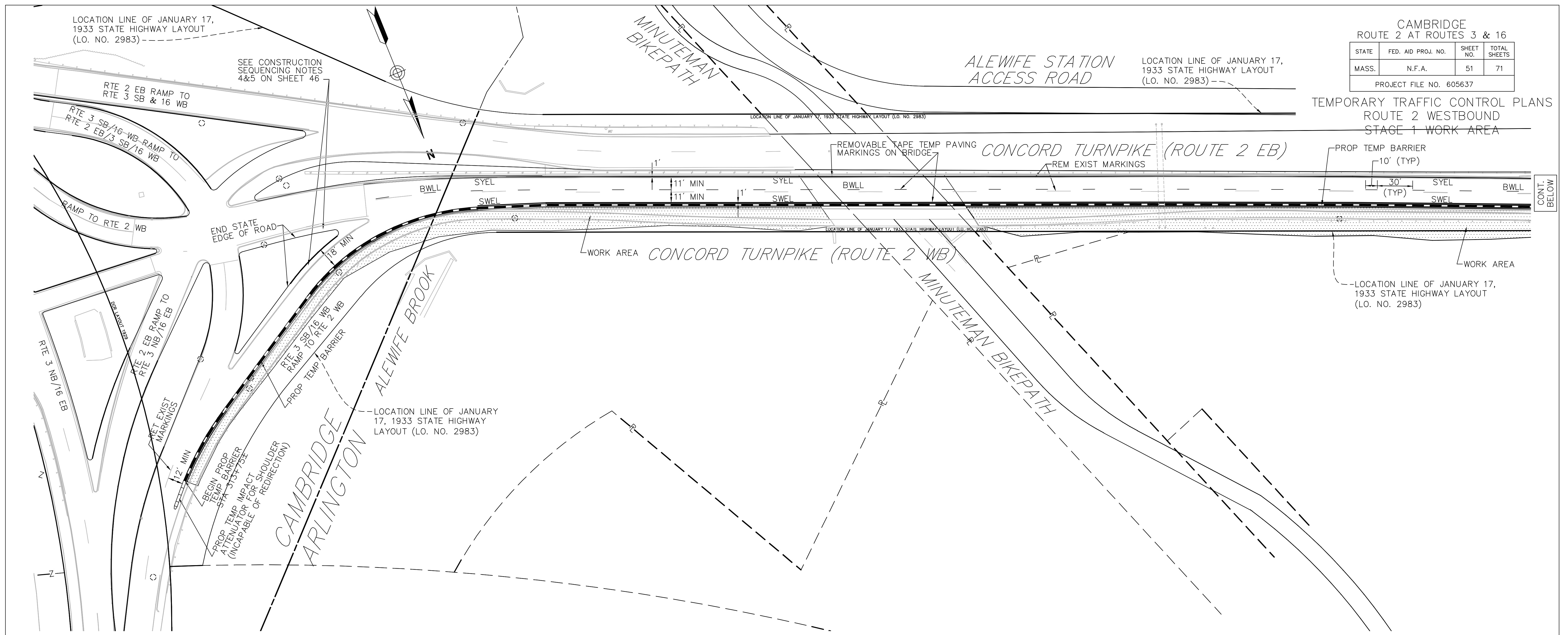


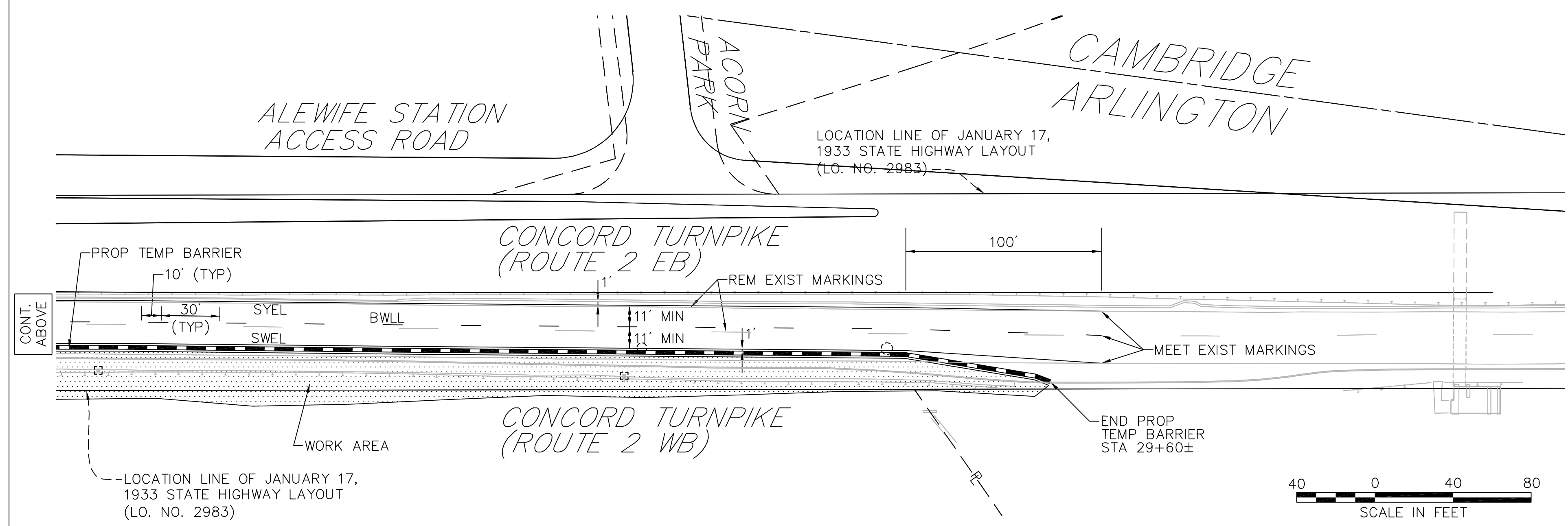
CAMBRIDGE ROUTE 2 AT ROUTES 3 & 16			
STATE	FED. AID PROJ. NO.	SHEET NO.	TOTAL SHEETS
MASS.	N.F.A.	51	71
PROJECT FILE NO. 605637			

TEMPORARY TRAFFIC CONTROL PLANS  
ROUTE 2 WESTBOUND  
STAGE 1 WORK AREA



CONT. BELOW

- NOTES:
1. WHERE EXISTING PAVEMENT MARKINGS ARE DIFFERENT THAN PROPOSED MARKINGS SHOWN, REMOVE BY AN APPROVED METHOD.
  2. TEMPORARY PAVEMENT MARKINGS SHALL BE PAINT UNLESS OTHERWISE NOTED.
  3. ALL PROPOSED MARKINGS SHOWN ARE TEMPORARY MARKINGS.
  4. LANE CLOSURES FOR WORK ZONE ACCESS SHALL BE PERMITTED ONLY DURING OFF PEAK NIGHT-TIME TRAFFIC HOURS SUNDAY THROUGH THURSDAY FROM 10:00PM TO 5:00AM UNLESS OTHERWISE APPROVED BY THE ENGINEER.



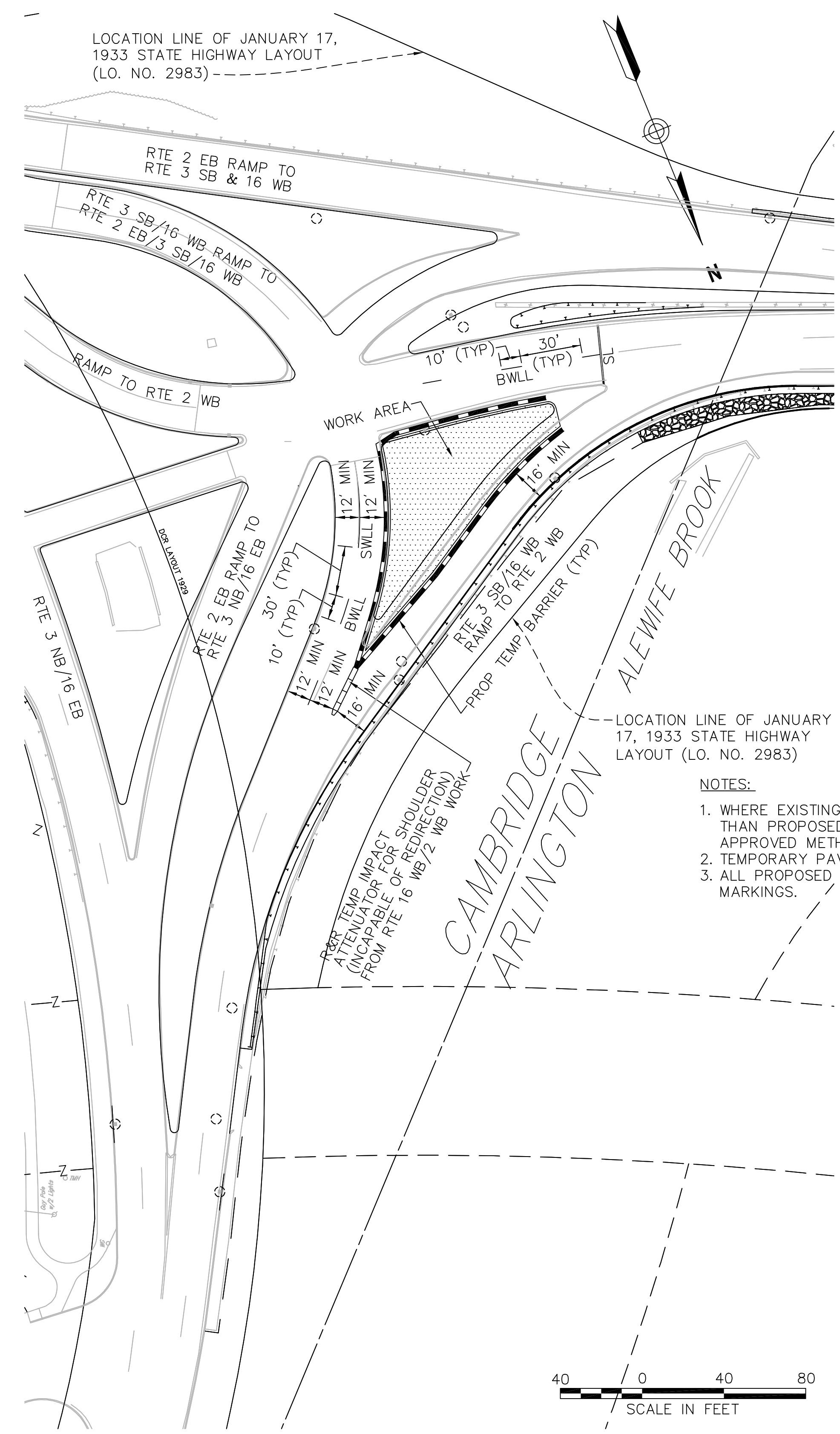
CONT. ABOVE

CAMBRIDGE  
ROUTE 2 AT ROUTES 3 & 16

STATE	FED. AID PROJ. NO.	SHEET NO.	TOTAL SHEETS
MASS.	N.F.A.	52	71

PROJECT FILE NO. 605637

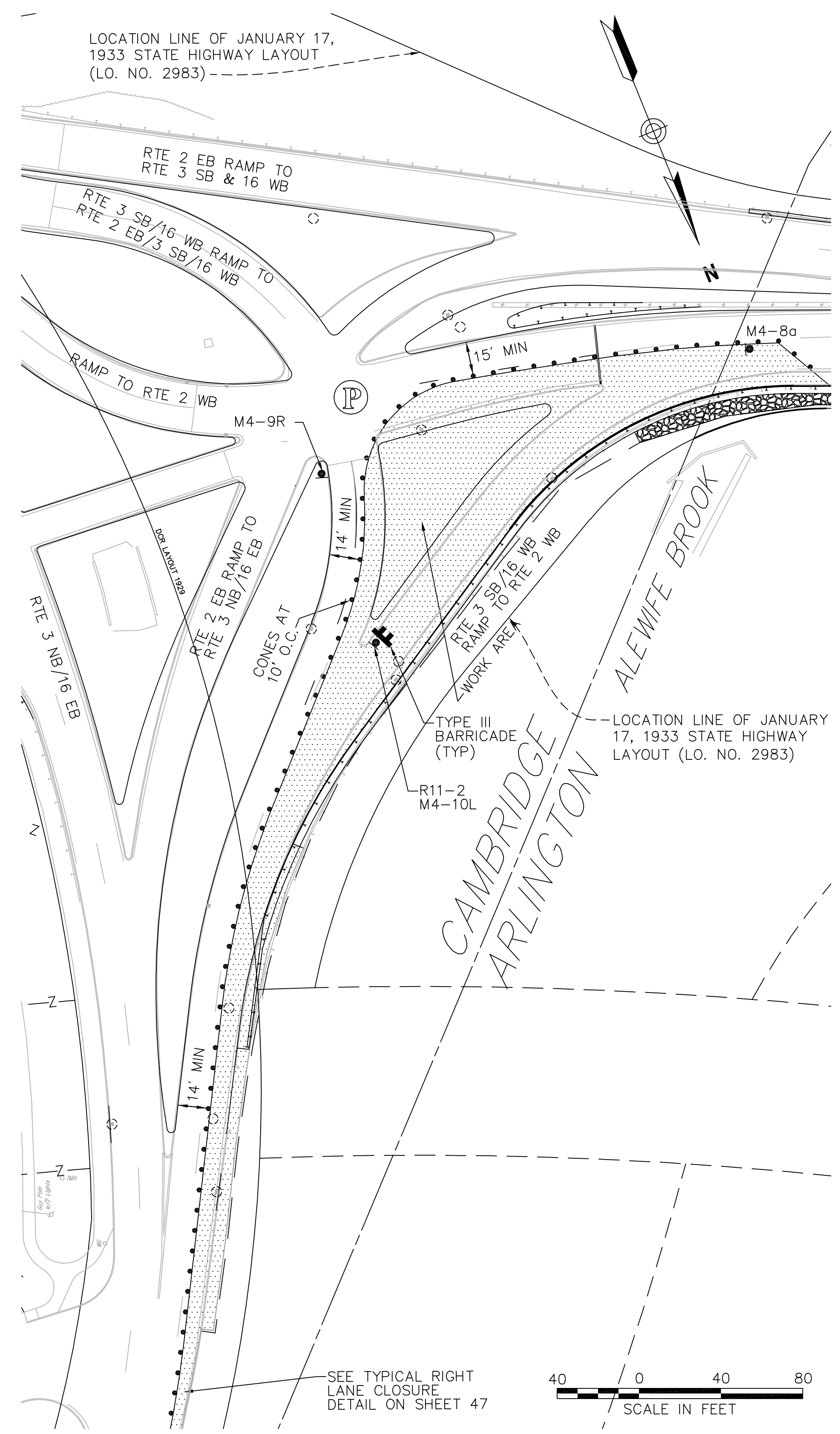
TEMPORARY TRAFFIC CONTROL PLANS  
ROUTE 2 WESTBOUND  
STAGE 2 WORK AREA & TYPICAL LANE CLOSURE



ROUTE 2 WESTBOUND  
STAGE 2 WORK AREA

- NOTE:**
1. ALL WORK TO BE COMPLETED DURING OFF PEAK NIGHT-TIME WORKING HOURS SUNDAY THROUGH THURSDAY FROM 7:00PM TO 5:00AM USING TYPICAL LANE CLOSURES/SHIFTS AND ROAD CLOSURES SHOWN UNLESS OTHERWISE APPROVED BY THE ENGINEER.
  2. LANE CLOSURES FOR WORK ZONE ACCESS SHALL BE PERMITTED ONLY DURING OFF PEAK NIGHT-TIME TRAFFIC HOURS SUNDAY THROUGH THURSDAY FROM 10:00PM TO 5:00AM UNLESS OTHERWISE APPROVED BY THE ENGINEER

- NOTES:**
1. WHERE EXISTING PAVEMENT MARKINGS ARE DIFFERENT THAN PROPOSED MARKINGS SHOWN, REMOVE BY AN APPROVED METHOD.
  2. TEMPORARY PAVEMENT MARKINGS SHALL BE PAINT.
  3. ALL PROPOSED MARKINGS SHOWN ARE TEMPORARY MARKINGS.



ROUTE 2 WESTBOUND  
TYPICAL LANE CLOSURE

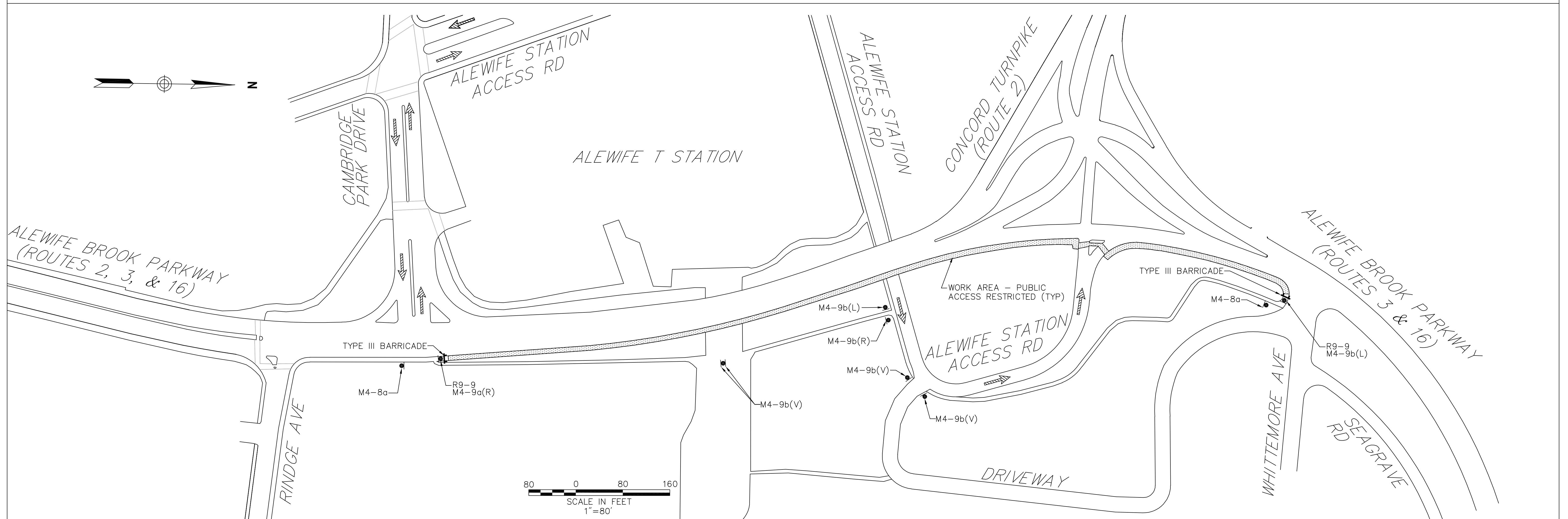
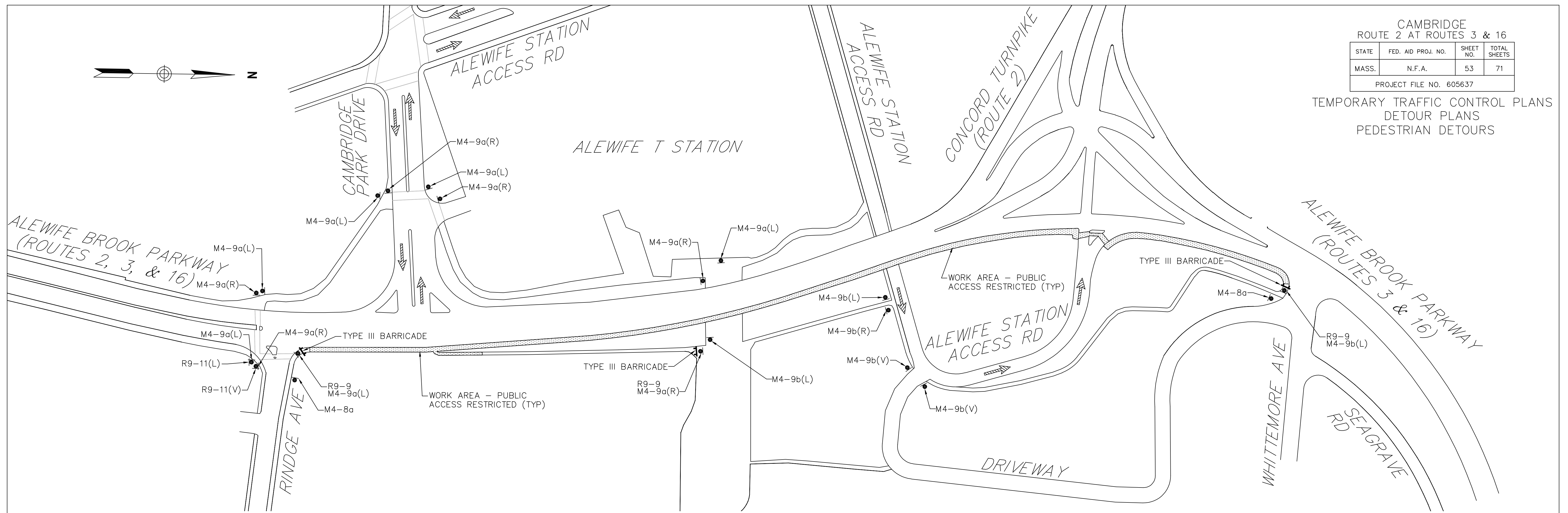
- NOTES:**
1. ALL WORK TO BE COMPLETED DURING OFF PEAK NIGHT-TIME WORKING HOURS SUNDAY THROUGH THURSDAY FROM 10:00PM TO 5:00AM USING TYPICAL LANE CLOSURES/SHIFTS AND ROAD CLOSURES SHOWN UNLESS OTHERWISE APPROVED BY THE ENGINEER.

CAMBRIDGE  
ROUTE 2 AT ROUTES 3 & 16

STATE	FED. AID PROJ. NO.	SHEET NO.	TOTAL SHEETS
MASS.	N.F.A.	53	71

PROJECT FILE NO. 605637

TEMPORARY TRAFFIC CONTROL PLANS  
DETOUR PLANS  
PEDESTRIAN DETOURS

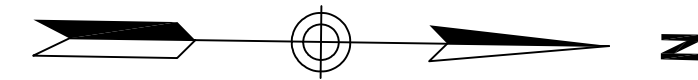




CAMBRIDGE ROUTE 2 AT ROUTES 3 & 16			
STATE	FED. AID PROJ. NO.	SHEET NO.	TOTAL SHEETS
MASS.	N.F.A.	54	71
PROJECT FILE NO. 605637			

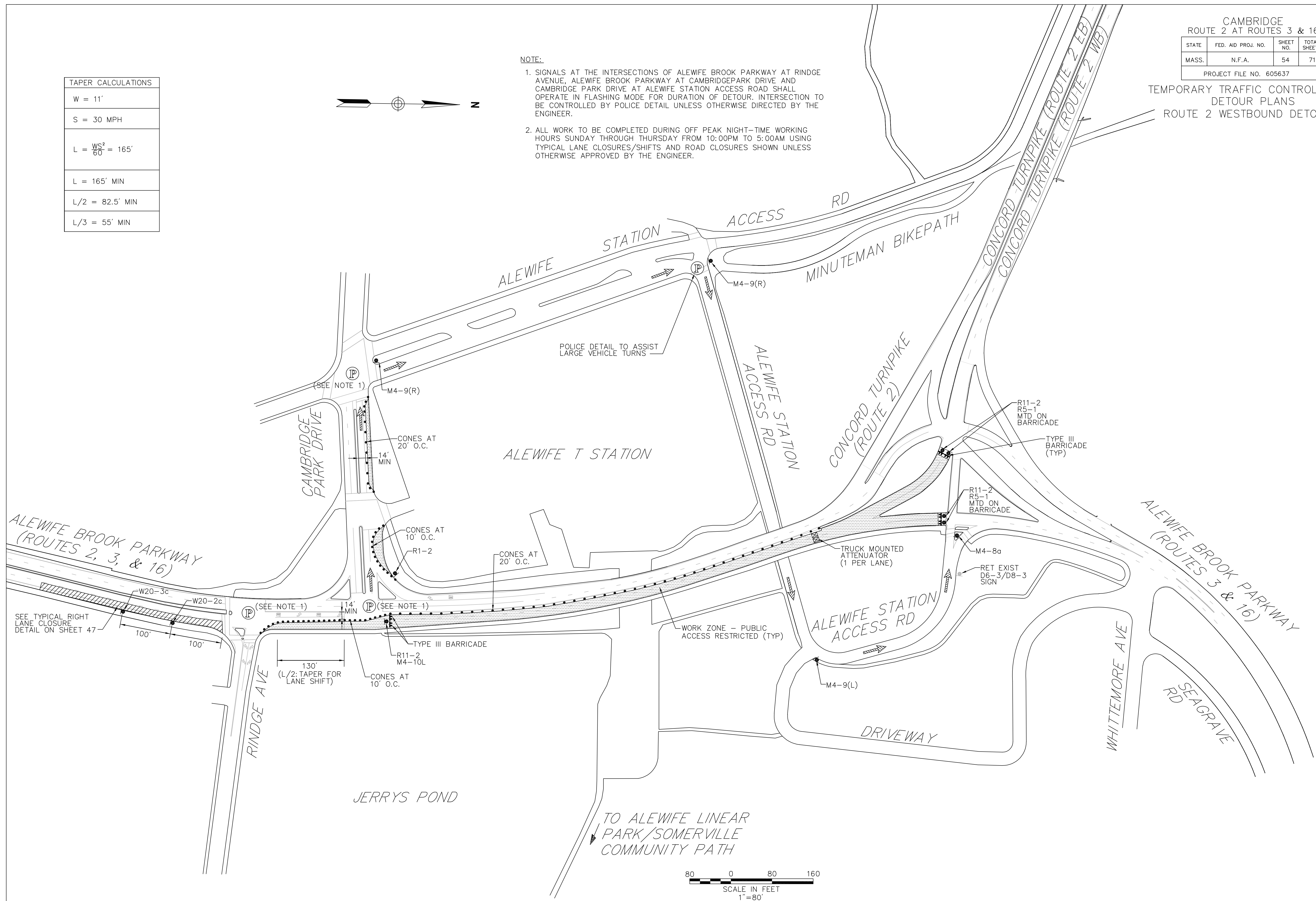
TEMPORARY TRAFFIC CONTROL PLANS  
DETOUR PLANS  
ROUTE 2 WESTBOUND DETOUR

TAPER CALCULATIONS	
W =	11'
S =	30 MPH
L =	$\frac{WS^2}{60} = 165'$
L =	165' MIN
L/2 =	82.5' MIN
L/3 =	55' MIN



NOTE:

1. SIGNALS AT THE INTERSECTIONS OF ALEWIFE BROOK PARKWAY AT RINDGE AVENUE, ALEWIFE BROOK PARKWAY AT CAMBRIDGE PARK DRIVE AND CAMBRIDGE PARK DRIVE AT ALEWIFE STATION ACCESS ROAD SHALL OPERATE IN FLASHING MODE FOR DURATION OF DETOUR. INTERSECTION TO BE CONTROLLED BY POLICE DETAIL UNLESS OTHERWISE DIRECTED BY THE ENGINEER.
2. ALL WORK TO BE COMPLETED DURING OFF PEAK NIGHT-TIME WORKING HOURS SUNDAY THROUGH THURSDAY FROM 10:00PM TO 5:00AM USING TYPICAL LANE CLOSURES/SHIFTS AND ROAD CLOSURES SHOWN UNLESS OTHERWISE APPROVED BY THE ENGINEER.

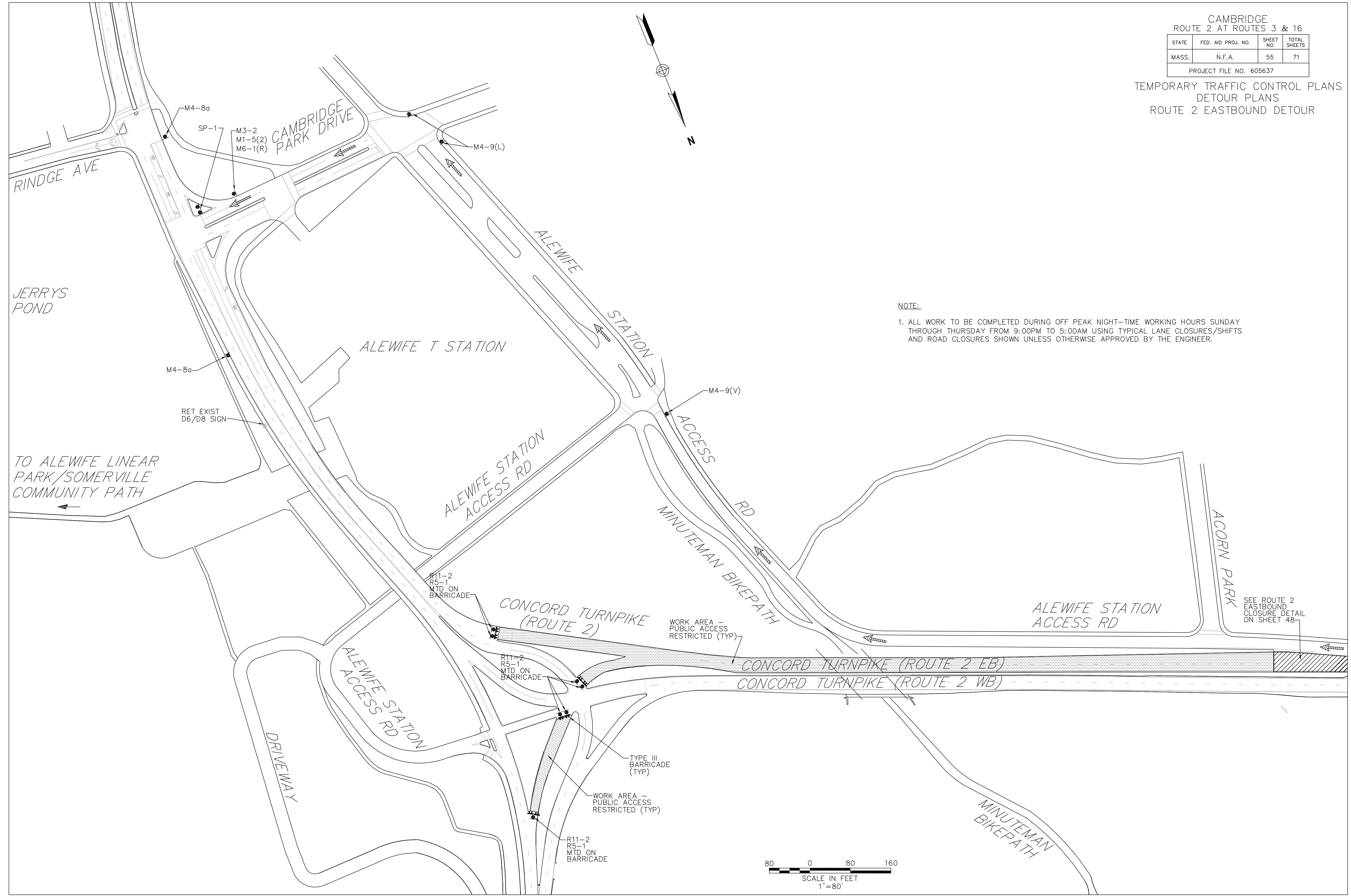


CAMBRIDGE  
ROUTE 2 AT ROUTES 3 & 16

STATE	FED. AID PROJ. NO.	SHEET NO.	TOTAL SHEETS
MASS.	N.F.A.	55	71

PROJECT FILE NO. 605637

TEMPORARY TRAFFIC CONTROL PLANS  
DETOUR PLANS  
ROUTE 2 EASTBOUND DETOUR



NOTE:

1. ALL WORK TO BE COMPLETED DURING OFF PEAK NIGHT-TIME WORKING HOURS SUNDAY THROUGH THURSDAY FROM 9:00PM TO 5:00AM USING TYPICAL LANE CLOSURES/SHIFTS AND ROAD CLOSURES SHOWN UNLESS OTHERWISE APPROVED BY THE ENGINEER.

SEE ROUTE 2  
EASTBOUND  
CLOSURE DETAIL  
ON SHEET 48